

2019 - 2020

**FOREST TREE NURSERY
SEEDLING PRODUCTION SURVEY**

Scott Enebak
November 2020

2019 - 2020 Survey

- ✓ Questionnaire sent in June to all available nursery email addresses in 12 southern states.
- ✓ Used online Qualtrics to collect seedling information.
- ✓ Follow up telephone calls and email requests made to maximize participation and update addresses.
- ✓ Creation of an Excel data file, then data summary using SAS.
- ✓ Report preparation.

RESULTS

Questionnaire Response

- Total of 53 surveys sent out via Qualtrics Online Form
- 41 were filled out with seedling production numbers.
- 12 nurseries did not respond to online request.
- 8 of those 12 nurseries had responded to our requests in previous years.
- Used previous years' numbers.
- 51 surveys in data, two fewer data points than last year.

Conifer Production by Stock: 2019-20

	Conifer Production	Percent Change from Last Year
Bareroot Stock	808,013,000	- 3.5%
Container Stock	234,250,000	+2.8%
Total Conifer	1,042,263,000	-2.1%

Conifer Production: 2019-2020

Species	Production	Percent Change from Last Year
Loblolly Pine	833,795,000	- 3.4 %
Slash Pine	96,647,000	+8.7 %
Longleaf Pine	97,700,000	+3.6 %

- 88% of Loblolly pine produced is bareroot stock
- 81% of Slash pine produced is bareroot stock
- 87% of Longleaf pine produced is container stock

Conifer Production: 2019-2020

	2019-20	2018-19	2017-18	2016-17	2015-16	2014-15
Loblolly	80%	80%	79%	78%	77%	78%
Slash	09%	09%	10%	11%	10%	10%
Longleaf	09%	09%	09%	09%	11%	11%
Total	98%	98%	98%	98%	98%	99%

Production by Ownership Category: CONIFERS

	2019-2020		2018-2019	
	Production	Percent	Production	Percent
Bareroot				
State	69,993,000	9	77,094,000	10
Private	555,666,000	69	509,567,000	64
Industry	182,354,000	23	211,101,000	26
Container				
State	7,751,000	3	7,085,000	3
Private	187,045,000	80	202,521,000	89
Industry	39,454,000	17	17,221,000	08

Table 7

CONIFER Production by Stock Type: 2002-2019



Hardwood Production

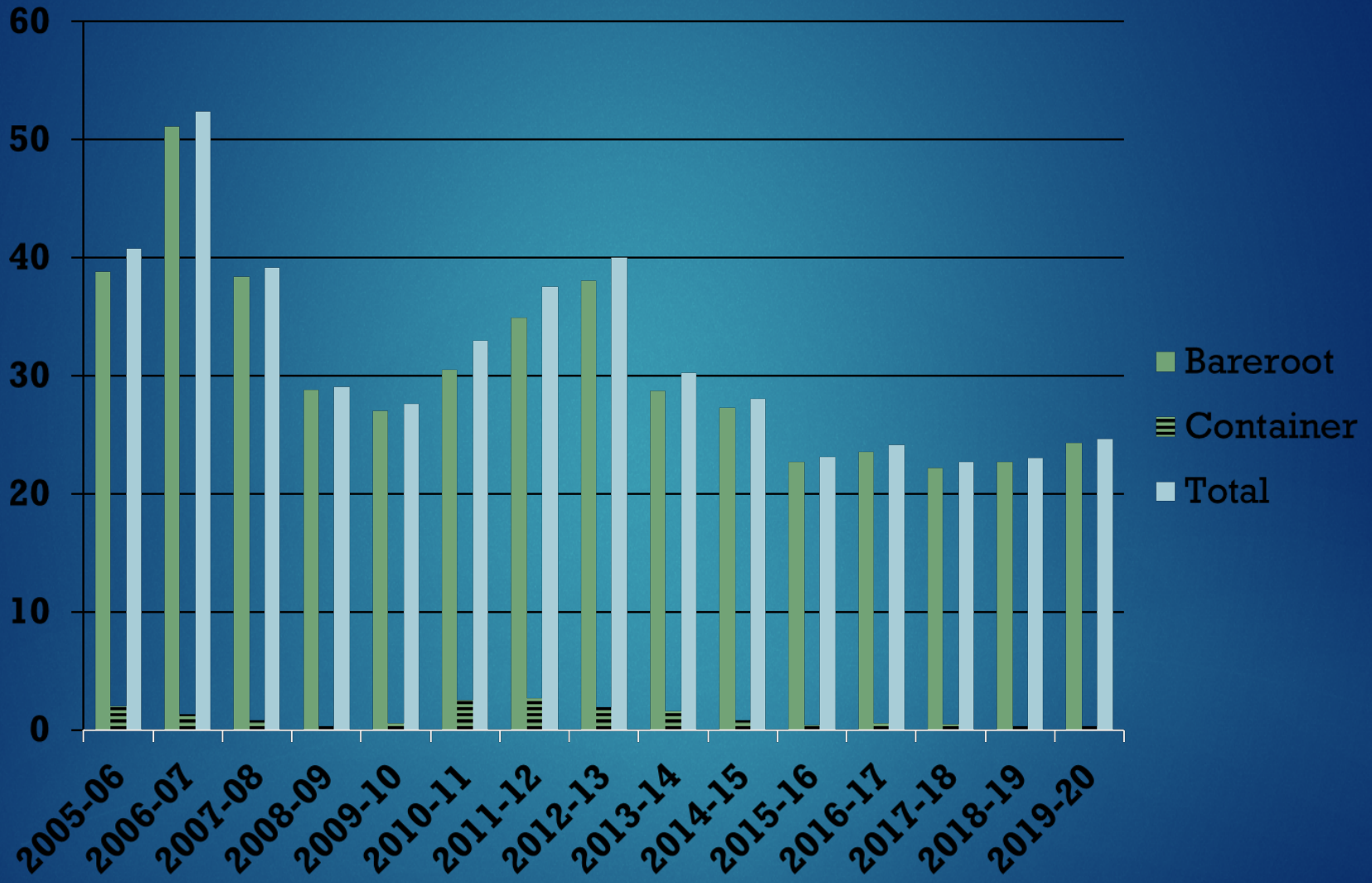
	2019-2020		2018-2019		2017-2018	
	Numbers	Percent Change	Numbers	Percent Change	Numbers	Percent Change
Bareroot Stock	24,312,000	+7.0%	22,679,000	+1.0%	22,467,000	-5.0%
Container Stock	341,000	+2.0%	335,000	+3.7%	323,000	-40%
Total Hardwood	24,653,000	+7.0%	23,014,000	+1.0%	22,790,000	-6.0%

RESULTS - Hardwood production

	2019-20	% Change Previous yr	2018-19	% Change Previous yr
Dogwood	204,000	-32 %	269,000	-34%
Green Ash	393,000	+20 %	318,000	-42%
Oak	15,963,000	+7 %	14,821,000	+6%
Others	4,976,000	-3 %	5,117,000	+9%
Pecan	626,000	+3 %	606,000	-60%
Sweetgum	1,376,000	+44 %	758,000	-36%
Sycamore	479,000	+13 %	413,000	-52%
Walnut	124,000	+17 %	103,000	-9%
Yellow Poplar	512,000	-19 %	609,000	-6%
Total	24,653,000	+7 %	23,014,000	+1%

Table 6

Hardwood Production 2005-2020



Production by Ownership Category: Hardwoods

	2019-2020		2018-2019		2017-2018	
	Production	Percent	Production	Percent	Production	Percent
Bareroot						
State	10,081,000	41	10,357,000	46	8,302,000	37
Private	14,229,000	59	12,321,000	54	14,132,000	62
Industry	0	0	0	0	34,000	1
Container						
State	3,000	1	3,000	1	2,000	1
Private	338,000	99	332,000	99	321,000	99
Industry	0	0	0	0	0	0

Table 7

Production by Ownership Category: ALL SPECIES

	2018-2019			18-19 (MM)	17-18 (MM)	16-17 (MM)	15-16 (MM)
State	87,828,000	8%		8%	9%	9%	8%
Private	757,278,000	71%		69%	67%	53%	59%
Industry	221,808,000	21%		22%	24%	38%	33%
Total	1,066,914,000			1,088.0	1,062.5	1,069.9	1,034.5

Table 10

Production by State - All species

	2019-2020 Production (x 1000)	Rank	% Change Previous Year	2018-2019 Production (x 1000)	Rank	% Change Previous Year
Alabama	121,360	3	10	86,246	5	-8
Arkansas	93,393	4	-17	111,917	3	7
Florida	52,701	8	13	46,501	8	-22
Georgia	337,305	1	2	328,599	1	-1
Louisiana	44,903	10	-11	50,559	7	8
Mississippi	85,872	5	0	85,804	6	-4
N. Carolina	66,745	7	5	26,230	10	-62
Oklahoma	3,009	12	9	2,754	12	-28
S. Carolina	148,944	2	-8	161,454	2	14
Tennessee	5,150	11	-15	6,054	11	11
Texas	76,781	6	-14	89,328	4	2
Virginia	30,748	9	6	29,137	9	-6

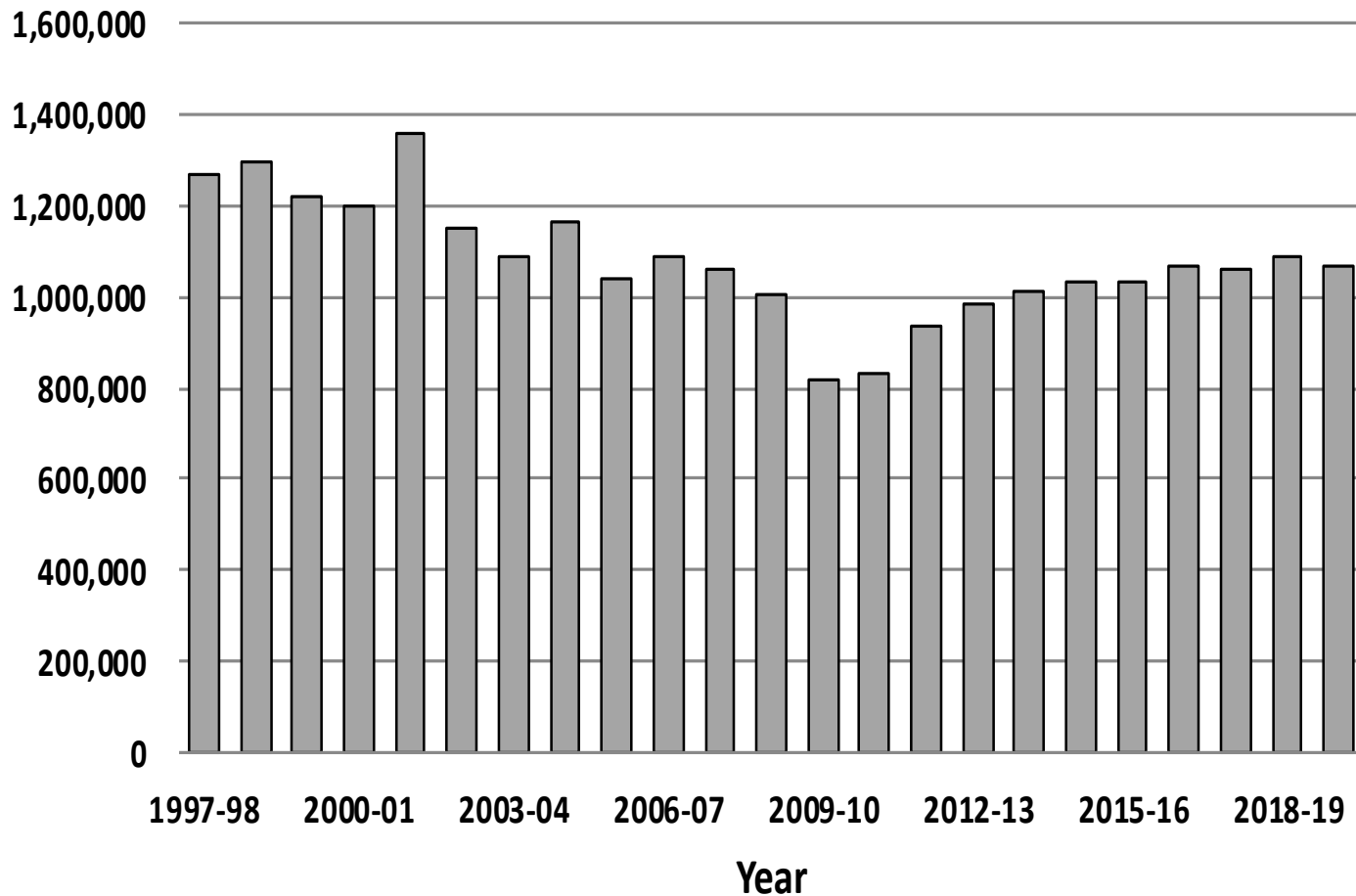
AU Southern Forest Nursery Management Cooperative Members

- All species & stock types

- ☐ Nursery Cooperative Members comprise 85% of the southern US region of seedling production.
- ☐ Nursery Cooperative Members comprised 91% of bareroot seedlings and 65% of container seedlings.

Seedling Production: 1997-2019

Seedling Production x 1000



2018-19 Seedling Production Survey

1. Regional seedling production was down 22 million seedlings from last year, but still above the magical 1 BILLION mark with 1,066,911,000 seedlings; 7th year in a row.
2. Seedling production in 2019-2020 was down 1.9% overall across the region from the 2017-2018 planting season.
3. Regional bareroot conifer production is down 2.1% and hardwood production increase slightly (7%) 1.6 MM from the previous planting season.
4. Georgia is the No. 1 seedling producer for conifer (333.3 MM) and Arkansas is the No. 1 hardwood (9.1 MM) seedling producer.
5. Nursery Cooperative members continue to lead seedling production in the region and have increased it's contribution to container stock production.

